

Parish council news

Are you interested in the internet and managing a website? The parish council is looking for someone to manage their website and keep it up-to-date. Please contact the clerk if you think you can do this.

www.southwiltswilts.com/site/Quidhampton-Parish-Council/

Speed limits: the limit on the A3094, the Netherhampton Road, is to be reduced to 50 mph. The council decided to apply for a pinch point near Lock's Lane to slow traffic in the village, and when the review of C and unclassified roads takes place the council will ask for a 20 mph limit in the village to be considered.

Flooding: Ken Taylor, flood warden, reported that the main problems in Quidhampton appeared to be those in the road. Although he had been told of some cellars that flooded occasionally the water meadows do their job of absorbing water and most houses are built above the 100 year flood levels. He is meeting a Wiltshire Council road maintenance engineer to discuss the drainage problem which causes the flooding near Coronation Square bus stop and outside The Mill.

Icy weather: the council has asked for some salt and grit to be stored at The White Horse. It is intended that this should be used on the pavements

Dog fouling: the problem continues in some places. Following a successful strategy used in Downton and Porton the council has bought non-permanent fluorescent spray paint to highlight the offending mess.

Train travel: an organisation called transwiltstrail is lobbying for a regular rail service between Salisbury and Swindon.

Please complete their survey if you can:

www.transwiltstrail.org.uk

Next meeting **22 March**

Eight page newsletter, a one-off because there is so much more to report than usual—Ed.

Bodyshop Party

- nothing to do with cars!

Would you like to host a Bodyshop Party in your home? It's a great way to catch up with friends and try out Bodyshop products. Every month there are lots of great offers and if your party sales reach £150 you will get £25 free products of your choice! Choose: Makeover, Pamper or Skincare.

For details call Helen on 742062 or email

Contributors & Contacts

Police non emergency

number: 0845 4087000

St John's C of E Primary School:

322848

White Horse Inn: 742157

Parish Council clerk:

Clare Churchill 743027

quidhamptonpc@btinternet.com

1 Tower Farm Cottages, Skew Rd.

Wiltshire Council 0300 456 0100

Area Councillor Richard Beattie

tel: 01747 870285

richard.beattie@wiltshire.gov.uk

The Rector of Bemerton

Rev Simon Woodley 333750

Parish Office 328031

Problems with HGVs: contact

Peter.Jung@wiltshire.pnn.police.uk

copy to c.cochrane@imperial.ac.uk

or leave a note in the black box.

WI: Valerie Fry 742082

Village Hall bookings:

Sabine Dawson 742843

Newsletter editor: Bea Tilbrook 742456

bjtis@hotmail.co.uk Meadow Barn Fisherman's

Reach SP2 9BG.

Contributions and ideas welcome.

The newsletter is sponsored this month by
Quidhampton Parish Council

Quidhampton Village Newsletter

February 2011

NEW CHILDREN'S CENTRE FOR QUIDHAMPTON FAMILIES

The Sure Start government programme has found a new home for its Wilton children's centre: the old Threshers building in West Street. With a permanent base they will be able to offer more activities and support and local families will be consulted to find out exactly what they want.

The Wilton Sure Start Children's Centre is for **all families with children under five** in the rural area and offers activities, advice and information. Until the new Centre opens in April you can go to the Community Centre for:

baby massage on Monday

Mini Movers on Tuesday (parents and children from 9 months to 2 years)

Stay and Play on Thursday (parents and 3 to 5 year olds).

The Women's Institute welcomed several new visitors to their January meeting which included a talk about what happens behind the scenes at Salisbury Playhouse. Next meeting : **Tuesday February 8th** when the talk will be about steam engines (no, they are not just for men, and no, men can't come!).

Quidhampton Book Group The group enjoyed a social evening in January and chose the books for the year. Next meeting : **Thursday 24th February**, 7 p.m. in The White Horse. The book is *The Cellist of Sarajevo* by Steven Galloway, set during the siege of Sarajevo when life could end brutally at any time yet somehow people retained their humanity.

The group has thirteen members with space for a couple more. Other book groups in the area have waiting lists so if you are thinking of joining, don't hesitate for long.

There are also short courses such as one on behaviour strategies (how to avoid your child having a screaming fit in the supermarket!) and a baby clinic. Everyone is welcome and all activities are free.

The emphasis is always on doing things with your child and a special day for dads to do that will be held in Quidhampton Village Hall on 9th April from 9.30 to 12.00. There will be craft activities to do together - making an Easter gift perhaps - and coffee, snacks etc. And it's all free. The Wilton Children's Centre co-ordinator is Quidhampton resident Joy Wagstaff, so you know you will always get a warm welcome, and have fun. More details from: 01722 411178 or www.wilton.childrenscentre.org

Cribbage players meet fortnightly, experienced and beginners.

Teas were provided for the Ramblers Association in the Village Hall one Sunday in January resulting in over **£100** for WI funds and more than thirty very satisfied Ramblers.

The White Horse

New Year's Eve was a successful event and **Burns Night** was sold out. Food, music (not just bagpipes!), dancing and good company - what more could you want? Thanks to John, Janice and Ron Smith for organising it.



**White Horse Valentine's dinner:
14th February**

NEW PATH FOR WALKERS AND CYCLISTS

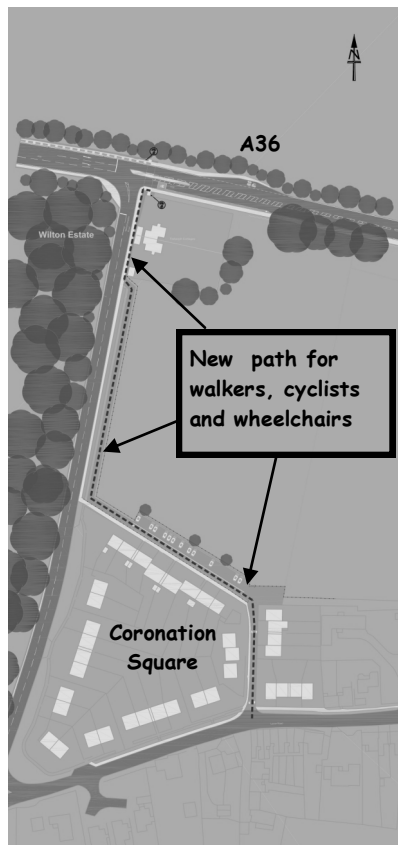
Report of consultation from Sustrans Area manager, Andrew Millington

On January 11 plans for a new path for walkers and cyclists in Quidhampton were displayed in the Village Hall for local people to view and comment on. This was organised by Wiltshire Council and the charity Sustrans, who enable people to make more of their everyday journeys by foot, bike and public transport.

Both organisations have been working with the Highways Agency to create a safe route for walkers and cyclists between Wilton and Salisbury. The plans were for a new path linking **Coronation Square to Park Wall junction**.

Wiltshire Council is submitting a planning application for this and wanted to hear local people's views. In addition, the Highways Agency will be constructing a new path along the north side of the A36 from the crossing at Park Wall to Wilton roundabout. The long-term aim is to create a link all the way into Wilton. This plan shows the path from Coronation Square to Park Wall. The proposal is for a 2.5m wide path running around the edge of the field and in front of the houses at Park Wall. It will have a tarmac surface which is the most

durable and designed so walkers, cyclists and wheelchair users can pass each other without stepping onto the grass. Over 50 people came along to look at the plans. With a couple of exceptions, comments were supportive- in fact many respondents wanted even more done! In particular



people were disappointed that there was no formal crossing point at Wilton roundabout. The Highways Agency has not agreed to a crossing but Wiltshire Council and Sustrans are looking at where it could be built and how it could be funded.

There was also support for making improvements to Lower Road for pedestrians and cyclists a priority. Wiltshire Council is considering how to improve Lower Road but the link from Park Wall link needs to be prioritised because the Highways Agency is already planning to build the path alongside the A36. It was suggested that the path should be better lit and the designer will look into

this. Other suggestions included extending the route along the A36 into Salisbury and south to Netherhampton.

Sustrans is pleased there has been so much interest in delivering even more walking and cycling links. If you have internet access you can see the plans in more detail at <http://www.wiltshire.gov.uk/parkingtransportandstreets/towncentreschemes/pciwiltonsalisburyalderbury.htm>. Please send your comments to transportation@wiltshire.gov.uk 01722 434671

JOHN HOUSE (JACK) 1922 - 2010

It is with sadness we report the death of Jack House who, although not a resident of Quidhampton, was very much a part of village life through his role as tenant farmer. Jack was born in Dorset into a farmworking family. His first job was as a carter at Newcourt Farm near Charlton where his family settled. At that time there were nearly a million carthorses working on the land, 26 of them at Newcourt Farm. Jack took to being a carter like a duck to water and did all the horse related jobs on the farm including driving three horses on the binder at harvest time. During the war he was in the Downton Home Guard. He married Phyllis in 1949 and they moved to Wilton in 1952 to raise a family. The days of horses were now over and he reluctantly became a dairyman on Burdensball Farm. In 1958 it reverted to the Wilton Estate and Jack started out on his own account as a landscape gardener.



When Dairy Farm, Quidhampton, became vacant the Wilton Estate rented it to him and Jack not only began to breed Shire horses but also to plough again, first at the Dorset Steam fair in 1971 and then at competitions all over the south of England. He was very successful and had a cabinet full of trophies.

Jack is remembered in Quidhampton as a true lover of horses and a devoted family man, although he perhaps never fully got over the death in 1966 of his youngest son Dennis at the age of eleven and a half. He still carried bales of hay to the horses in his early eighties, and died in the Winterbourne Care Home on 31 December.

Police Report

The only reported crime in the Quidhampton area has been that of milk being stolen from doorsteps. If it has happened to you and you haven't contacted the dairy or the police, please do so as it will help build up a picture of where it is happening and how often.

Pete Jung likes to think the reduction in crime across the Wilton Rural area is partly because of his communication group (the people who receive his emails). As this becomes larger people are more aware of what has been going on and are more alert. In his opinion it is the best form of crime prevention and he is keen for more to join: email:

Peter.Jung@wiltshire.pnn.police.uk.

He reminds everyone of the importance of letting the police know straightaway if something is wrong "If you see someone clearly who doesn't fit in with the area disappear round the back of someone's house and you get that gut feeling that a crime is about to happen then dial 999.

Remember we will always be glad to come out to a well intentioned report even if it turns out to be legitimate." Don't use email on that occasion!

There were two reports in December of HGV's through Quidhampton. It helps to say exactly where you saw the HGV, not just "in the village."

LT COL CHRISTOPHER ROSS FBIM 1931 - 2010

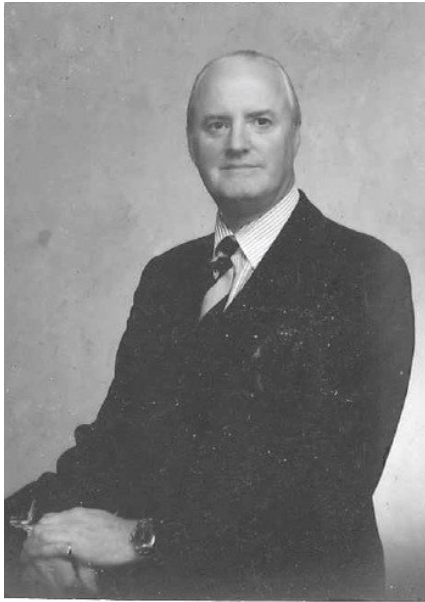
It is with great regret that we report the death of Lt Col Christopher Ross on 22 December. He and Fiona moved to The Old School House in 1995, after 25 years in Great Wishford.

Christopher Ross was commissioned from Sandhurst into the Kings Hussars in 1951 and served in Egypt, Libya, Borneo, Singapore and Germany. As well as exemplary service he was commentator at many three day events and trained the army's Cresta Run team. In 1979 he retired to serve his regimental association and the Salisbury Diocese. For 17 years he was the senior administrator for the diocese, which consists of 457 parishes stretching over 2000 square miles.

His talent for management was most publicly seen in meticulously planned and very successful events, including Royal Visits, but he also transformed the administration from mediocre to a model of good practice. He was made a lay Canon of the Cathedral in 1995.

Christopher's son described him as "larger than life" and John Blane called him "a lovely, lovely man, one of life's gentlemen. He had a lot to say but it was always interesting and he would talk to anyone from Princess Anne to a road sweeper. Everyone spoke very highly of him and he will be really missed by the Monday Club."

He leaves Fiona, son Alastair, daughter Geraldine, five grandchildren and, in The White Horse, a glass tankard, with a handle, inscribed with his initials.



School News

The cold weather before Christmas did not affect the hardy pupils at Bemerton St John and we were able to stay open, albeit with a slightly later start on one morning. It just goes to prove how hardy we are! This term has set off at a brisk pace and the pupils are thoroughly enjoying their new topics. The younger pupils love learning about dinosaurs, toys and space. In key stage 2 the transport project has really fired their imagination. One child was reported to be in a rush to get to school as he was boarding the Titanic at nine o'clock! We had a wonderful effort of fundraising last term,

raising £150 for Children in Need, £160 for the Riding for the Disabled and we sent off 70 shoeboxes for children in Albania. A huge thank you to our friends at Quidhampton for your support.

Estelle Smith, headteacher

Fund raising: Cilla Pickett is delighted to announce that she has collected enough to buy a syringe driver, **over £1000**. This will now be part of the community nursing team's equipment and is in memory of her mother whose syringe driver had to be borrowed from elsewhere.

Cycle and walking path : other issues

Opposite you will see a report by Sustrans of the recent consultation about plans for the extension of the path from the Park Wall into Quidhampton. The consultation was well attended, and most people approved the proposals. There was lively discussion, however, about other traffic issues:

when pedestrians and cyclists get into Quidhampton they face a difficult and dangerous mix of walkers, cyclists and motor vehicles

the speed and amount of traffic using the village as a 'rat run'

speed of traffic along Netherhampton Road deterring walkers from using it. how dangerous it is to cross Wilton Road to get the bus

the dangerous spot on the route to St John's primary school where there is no footpath. *(the Sustrans representative told the editor they were trying to draw up plans for traffic lights but because of the bend it was difficult to make it safe for everyone)*

People were pleased to note that Egdam Place and the Coronation Square car parking spaces would be resurfaced and the pedestrian crossing at Wilton Road traffic lights would be enhanced. Andrew Millington also told us that a restoration of the 40 mph limit on Wilton Road into Salisbury is planned.

Wanted: garage to rent, in the village. Any offers?
Please call C. Herring 01722 741469.

Can you work this out?

Heard in The White Horse: if you take the last two digits of the year of your birth then add the age you will be this year the total is always 111. Strange but true! *(I have managed to work it out now but it is very clever: editor)*

Quiz and Games night

St.Michael's Community Centre

12th Feb 7:30

Entry by donation, nibbles and drinks provided.



After a successful trial the society meets monthly at St John's Primary School, 7.30, admission £5. The next films are mainstream

movies with excellent reviews. **Wednesday 23 February: Life is Beautiful**, "a hilarious and haunting comedy" set in war-time Italy and a concentration camp. *(Yes, the director finds humour even there. It's an amazing film everyone should see. You will laugh a lot but make sure you have a box of tissues as well: editor)*

Wednesday 6 April: Happy-Go-Lucky "a laugh-out-loud comedy about having fun, looking for love and getting on with life." Refreshments are on sale beforehand.

Enquiries: James Woods 422169

lisandjames@gmail.com

The society may show children's films on Saturdays, too. Some readers will have fond memories of Saturday morning shows at cinemas in the 50's and 60's. Great to think that might happen again in our community.

Celebration of George Herbert

St.Andrews church **27th Feb 4pm**

Preacher: Canon Jeremy Davies,
Cathedral Precentor.

Sing George Herbert hymns and enjoy medlar jelly on scones to finish.

Local History and Update: The Village Hall

A stone on the back wall records that the hall was originally built in 1852-3 as a reading room. This was for labourers building the railway and navvies working on the A36 turnpike. 'Reading room' was a room where church services were read, labourers being generally unable to read for themselves.

Lord Pembroke gave the land and the building was funded by public subscription. There was always controversy about the ownership however, and in 1895 the land proved to be still part of Wilton Park Estate, rented by the church. It was finally conveyed to the church in 1925. So we are a village without a church but we have a village hall standing on land owned by it. The Village Hall Committee pays a peppercorn rent of £5 a year to the Salisbury Diocese. There have been various refurbishments and additions over the years but no one seems to know why the hall is the unusual shape it is.

Church services

A Sunday School began meeting in the hall in 1892. Stan Cousins reported that at times in the 1920s services were not held due to lack of support and members of the theological college were asked to attend. In 1927 an altar was added in the recess where chairs are now stacked. Temperance meetings were also held in the hall and Clarrie Price, (1890-1996) daughter of the photographer featured in the last newsletter, remembered that a curate took temperance meetings especially for children. Church services and a bible class were held there until at least the 1950's.

Official occasions

Today the hall is used as a polling station but it has seen other official functions over the years. None can have been sadder than the inquest held on July 3 1903 into the deaths by drowning of two of the sisters of Clarrie Price mentioned above. The girls, aged 16 and 11,

had gone into the meadows to collect sticks. It is believed the youngest fell into the river and the eldest tried to save her.

Modern times

Until at least 1970 the hall appeared on OS maps as the Mission Room but in 1988 it achieved charitable status as a village hall which made it easier to apply for grants. The next fifteen years were a boom time with activities organised to support the hall and for other occasions such as the VE Day anniversary celebrations. These included a play-group, an old folks social afternoon, the gardening club with its annual show, bonfire night fireworks displays, nativity play and carols, outings and many others. A sub committee formed to organise these became known as the entertainments committee. The bulbs around the village that brighten each spring were planted in 1998, as were some trees.

Today

There are two screens for films, slides etc, one permanently fitted to the wall, and a large mirror for dancing and exercise. Regular bookings are the WI, oriental dancing classes, and the parish council. Each year several children's parties are held there, as well as Bemerton Farm business

meetings and some charity events. Band and folk groups practise there from time to time yet the hall could be used a lot more than it is.

Rates have been raised from April 1st and will be £6 an hour until October 31st, when the winter rate of £8 an hour begins. There is a minimum hire fee of £10. That must be a bargain! Booking details are on the back page.

Jennifer Tyler is chair and secretary of the hall committee and Peter Dawson treasurer and invaluable handyman for odd jobs. If you are interested in serving on the committee then please contact Jennifer 744630.

Local history: editor's note and two requests

Since retiring I have become absorbed by part of the history of Quidhampton. Thanks to some great coincidences and the internet I am now in email contact with Barb Bentham, a Canadian great-grand daughter of **Victorian photographer, Charles Price**. His is a fascinating story. His well-to-do family lost their

money and he had to earn his own living. Whenever he had money, however, he drank and gambled it away and eventually his son arranged for Charles to join him in Canada so Charles's wife, Clara, could live out her final years in peace in Quidhampton. There is enough in this story to fill a book. Do you know any of these addresses? Rosetta Cottage, Salisbury; Swiss Cottage, Bemerton; Hollyhock Terrace, Quidhampton. They are on

letters written by the two young sisters who drowned (see Village Hall article). Any ideas? With the help of Katy Pearson I am continuing to talk to villagers about **Quidhampton in the forties and fifties**. Graham Stokes told me about Stan Cousins work and the papers and photographs he had and the model of the village that he made and displayed at the summer fete. **Does anyone know where any of this valuable research material is now?**

If you can add anything to any of this or would like to join me in finding out more please get in touch. Discoveries are even more exciting when there is someone to share them with.

Hundred Club January winners:

1st	P Budgen	18
2nd	A Sewall	89
3rd	R Stokes	76

